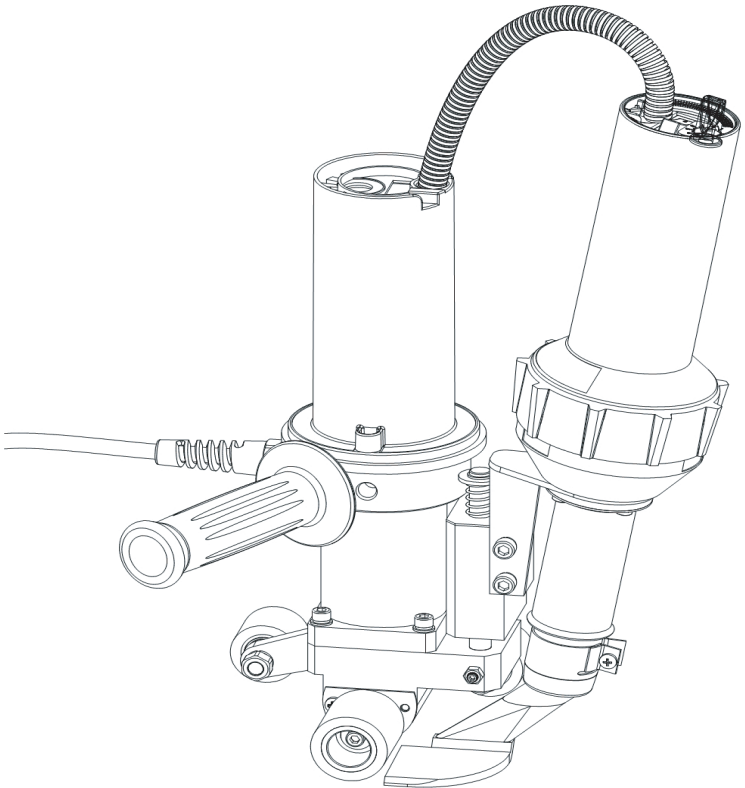


# TAC

## Roofing Hot Air Welder

### Manual





Please read this manual carefully before using this machine, and keep it for future reference.

## Application

Overlapping welding of thermoplastic sealing waterproof material

(TPO/FPO, PVC, ECB EPDM, EVA, PIB, PMI, PO, PP)

Girth Welding

Facade Welding



## Precautions



Please confirm that the machine is turned off and unplugged before disassembling the welding machine, so as not to be injured by live wires or components inside the machine.



The welding machine generates high temperature and high heat, which may cause fire or explosion when used incorrectly,



especially when it is close to combustible materials or explosive gas, Please do not touch the hot wedge (during welding work or when the welding machine has not completely cooled down) so as not to burn.



The power supply voltage must match the rated voltage marked on the welding machine and be reliably grounded. Connect the welding machine to a socket with a protective ground conductor.



In order to ensure the safety of the operators and the reliable operation of the equipment, the power supply at the construction site must be equipped with a regulated power supply and a leakage protector.



The welding machine must be operated under the correct control of the operator, otherwise it may cause combustion or explosion due to high temperature.



It is strictly forbidden to use the welding machine in water or muddy ground, avoid soaking, rain or damp.

## TAC Parameter

Model	<b>TAC</b>
Voltage	230 / 120 V
Frequency	50 / 60 Hz
Power	1700 W
Welding Speed	0.5 - 5.0 m/min
Heating Temperature	50 - 620 °C
Weld width	40 mm
Size( L*W*H)	270×160×420 mm
Net Weight	5 KG

## TAC Nameplate

The model identification and serial number identification are marked on the nameplate of the machine you choose.

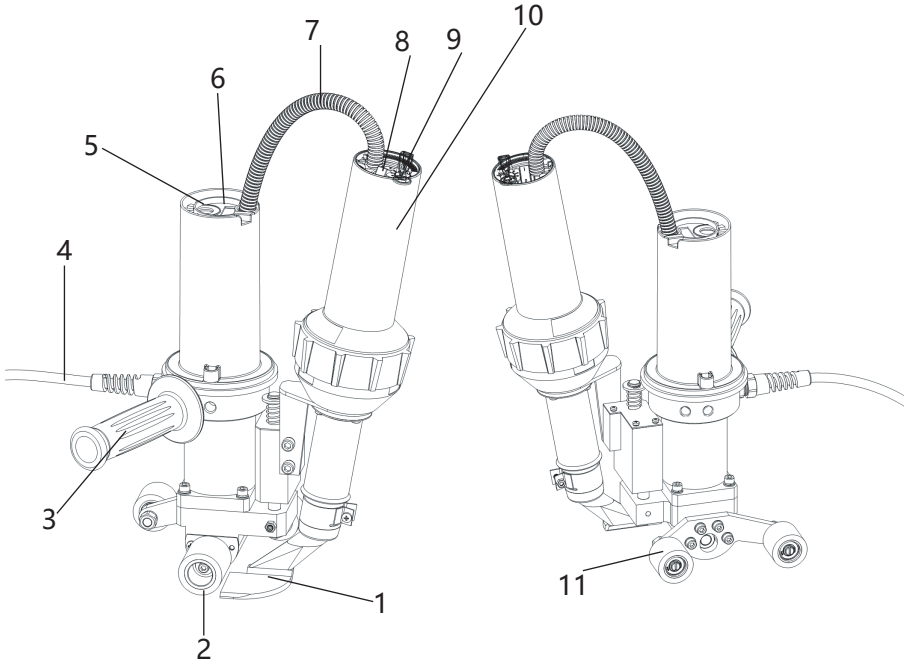
### ROOFING HOT AIR WELDER

Model: TAC  
 Frequency: 50 / 60Hz  
 Speed: 0.5-5.0m/min  
 Welding Seam: 40cm  
 SN: See Machine Frame

Voltage: 230V /120V  
 Power: 1700W  
 Temperature: 50-620°C  
 Weight: 5Kg



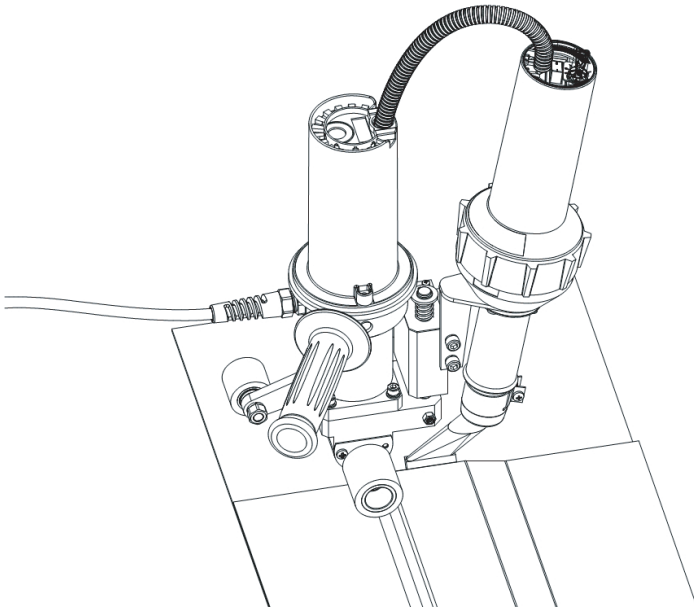
## TAC Main Parts



- |                                 |                       |
|---------------------------------|-----------------------|
| 1、Nozzle                        | 2、Pressure Roller     |
| 3、Handle                        | 4、Main Power Wire     |
| 5、Walking Speed Adjustment Knob | 6、Moving Switch       |
| 7、Hot Air Blower Power Wire     | 8、Blower Power Switch |
| 9、Temperature Adjustment Knob   | 10、Hot Air Blower     |
| 11、Crawling Wheel               |                       |

## TAC Operations

1. Set the temperature (rotate the temperature adjustment knob (9) ) .
2. Set the walking speed (rotate the walking speed adjustment knob (5) ) .
3. Turn on the blower power switch (8) .
4. When the temperature of the air gun reaches the set value, insert the air nozzle (1) between the upper film and the lower film to be welded (as shown below) .
5. Press the handle (3) with your hand.
6. Turn on the moving switch (6).
7. The machine should pay attention to the pressure roller (2) edge and the relative position of the edge of the film.
8. After welding, lift the machine slightly and move the air nozzle (1) away from the welding position.
9. Turn off the moving switch (6).
10. Turn off the air blower power switch (8) after the air blower cools down .



## Routine Maintenance

- Use steel brush to clean the hot air nozzle
- Clean the air inlet at the back of the hot air blower

## Quality Assurance

- This product guarantees a 12-month shelf life from the day it is sold to consumers. We will be responsible for failures caused by material or manufacturing defects. We will repair or replace defective parts at our sole discretion to meet the warranty requirements.
- The quality assurance does not include damage to wearing parts (Heating core, pressure roller, etc.), damage or defects caused by improper handling or maintenance, and damage caused by falling products. Irregular use and unauthorized modification should not be covered by the warranty.

## Repairs and Spare Parts

- It is strongly recommended to send the product to original company or authorized repair center for professional inspection and repair.

