

EGA Master

ART IN INNOVATION

DESATASCADOR ELECTRICO / ELECTRIC PIPE CLEANER / DEBOUCHEUR ELECTRIQUE

MANUAL DE INSTRUCCIONES
OPERATING INSTRUCTIONS

DRAINMATIC MAX 110

COD. 60288
COD. 60289



ELECTRIC PIPE CLEANER 20-110 mm



OPERATING INSTRUCTIONS

0.- Plug in the machine (switch must be in “OFF” position).

1.- Switch on the machine (select “FOR” position).

Positions in (F): OFF – Stop

FOR – Forward rotation

REV – Reverse rotation

Use the soft shaft of 40 mm to clear the pipe and the obstruction.

2.- Introduce the spring (A) by hand into the pipe until it stops (obstruction zone). Select an appropriate drill and securely connect it to the soft shaft (E). Push the drill along slider slot of the shaft to engage. This makes connection more reliable, easy and fast. To remove the soft shaft, insert the key and push the shaft with both hands in direction opposite to the T slot of the terminal to remove the shaft. It saves time and manpower.

3.- Steps 2 and 3 must be followed until the pipe is totally clean.



4.- Once the pipe is totally clean, extract the spring (A) by hand into the machine taking care not to introduce water or any other form of contamination into the machine.

5.- Switch off the machine (select “OFF” position).

6.- Unplug it of the mains.

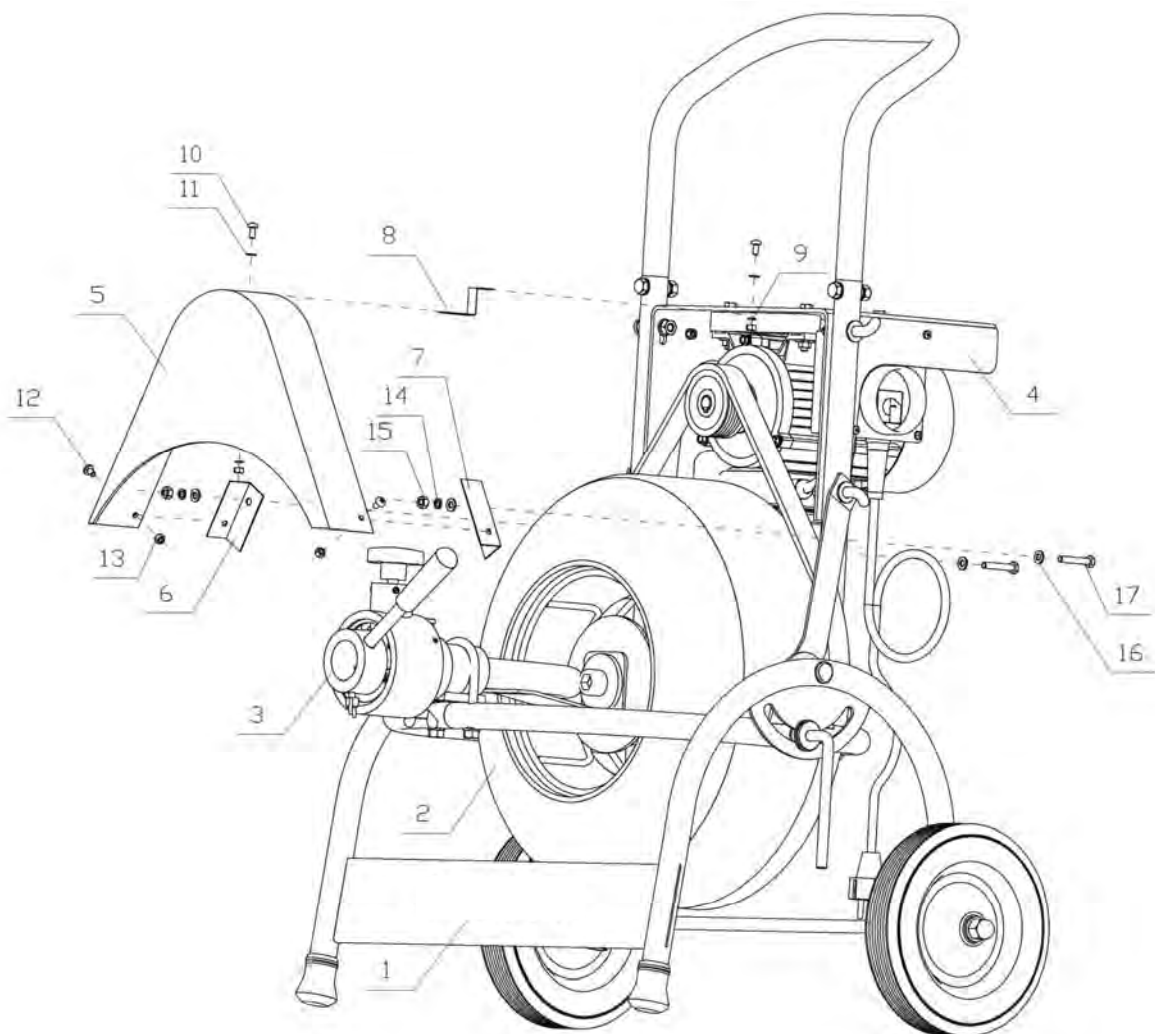
For using spring with any of the accesories shown on page 5, spring must be introduced by hand into the inner space of the machine.

ACCESORIOS

64644		Collection helical drills
64645		Olive-shaped helical drills
64646		Helical saw cutters
64647		Spade-shaped cutters
64683		Soft shaft connector Ø 40
64624		Protection gloves

ACCESORIES

64644		Taladro en forma de hélice colecta
64645		Taladro en forma de hélice abombada
64646		Cortador de sierra helicoidal
64647		Cortador en forma de pala
64683		Muelle conector Ø 40
64624		Guantes protectores



No.	Name	Qty	No.	Name	Qty
1	Assembly of frame	1	10	Cross recessed pan-head screw	2
2	Assembly of drum	1	11	Washer	2
3	Automatic advance assembly unit	1	12	Cross recessed pan-head screw	2
4	Electric assembly	1	13	Hexagonal nut	4
5	Belt cover	1	14	Spring washer	2
6	Connecting plate I	1	15	Hexagonal nut	2
7	Connecting plate II	1	16	Washer	4
8	Connecting plate III	1	17	Hexagonal screw	2
9	Spring washer	2			