



## SAFETY INSTRUCTIONS

### **Attention! Be careful.**

1. Do not wear loose clothing. They could be caught by moving parts of the machine.
2. Always wear gloves.
3. Before starting up the machine, check that the electric cable and switch are in optimum condition.
4. Before carrying out any maintenance work or change of accesories, disconnect the machine from the mains.
5. Always use the machine´s indicicated accesories because if you don´t, it could lead to risk of personal injury.



## TECHNICAL SPECIFICATIONS

<b>Voltage</b>	110 V (COD. 60283) - 230 V (COD. 60282)
<b>Pipe capacity</b>	Ø 20-150 mm.
<b>Max. length</b>	30 m.
<b>Ø spring</b>	Ø 8-16-22 mm.
<b>Turning speed</b>	400 rpm
<b>Machine weight</b>	42 Kg.
<b>Working weight</b>	16 Kg.
<b>Power</b>	390 W.





Plug in the machine (switch must be in "OFF" position).

1. Switch on the machine (select "FOR" position).

Positions: OFF – Stop

FOR – Forward rotation

REV – Reverse rotation

2. Choose the soft shaft of 8 mm, 16 mm or 22 mm in accord with the pipe to clear and the obstruction.

To use the drill of 8 mm, the white plastic sleeve of the back zone must be extracted and introduce the connector of Ø 8 soft shaft.

The white plastic sleeve must be correctly placed with Ø 16, 22 soft shafts.

3. Select an appropriate drill and securely connect it to the soft shaft. It must be fixed to the spring for joining them. In order to remove it, the user must insert the screwdriver and push it. Introduce the spring by hand into the pipe until it stops (obstruction zone).

4. The handle has 2 positions:

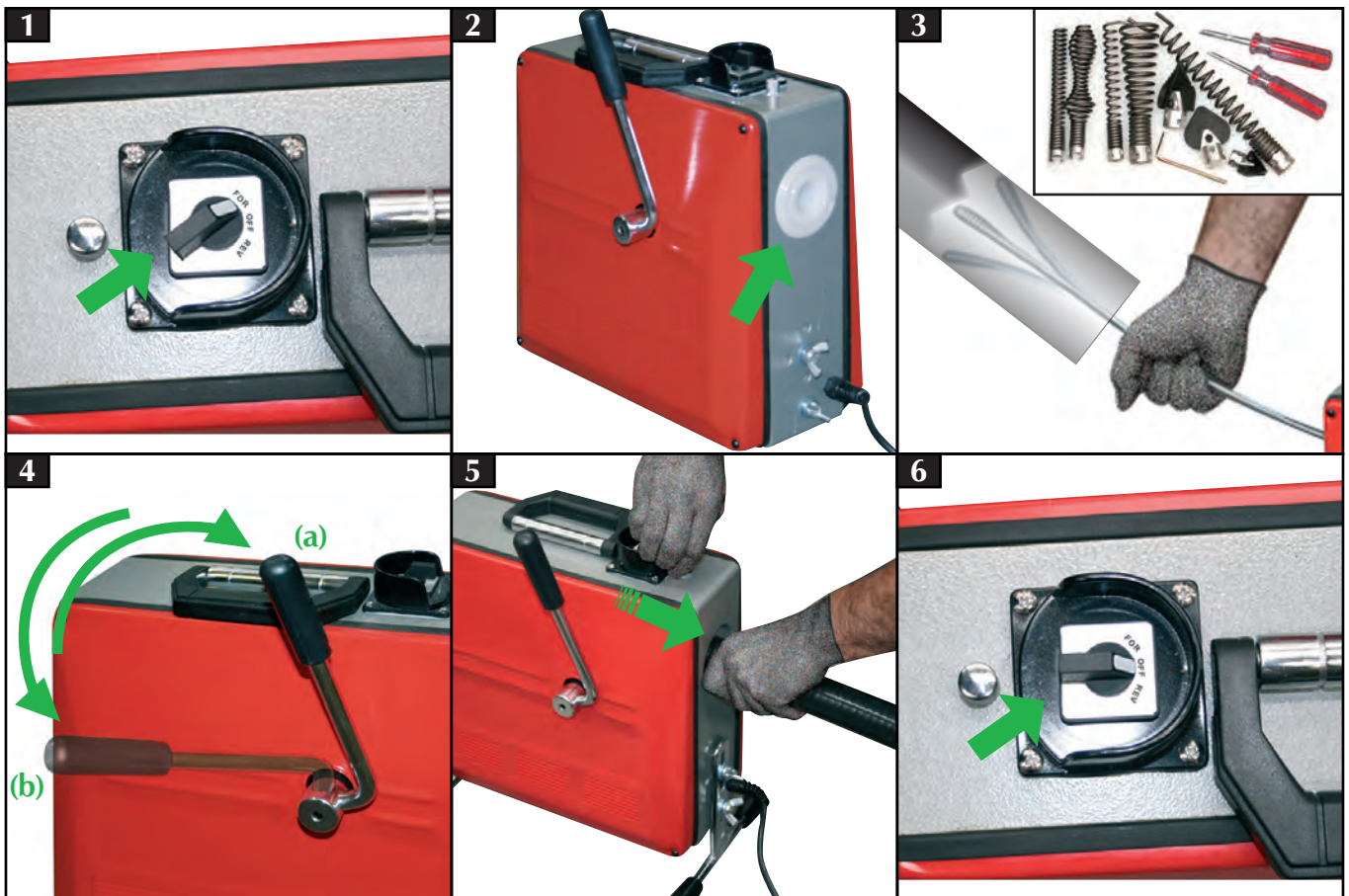
- rest position (a): allow to advance and go back the soft, while it is not turning.

- pressed (b): the spring will start turning and will clear the obstruction zone.

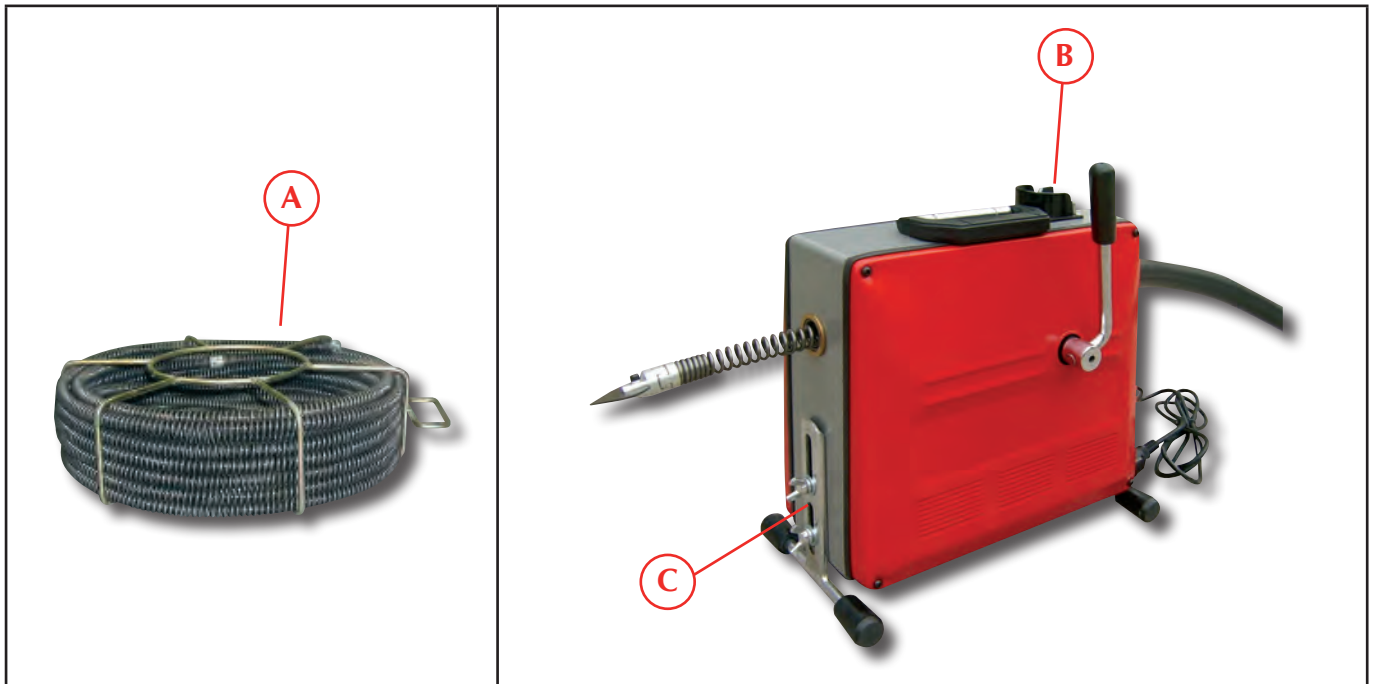
5. Once the pipe is totally clean, extract the spring by hand into the machine taking care not to introduce water or any other form of contamination into the machine.

6. Switch off the machine (select "OFF" position).

Unplug it of the mains.

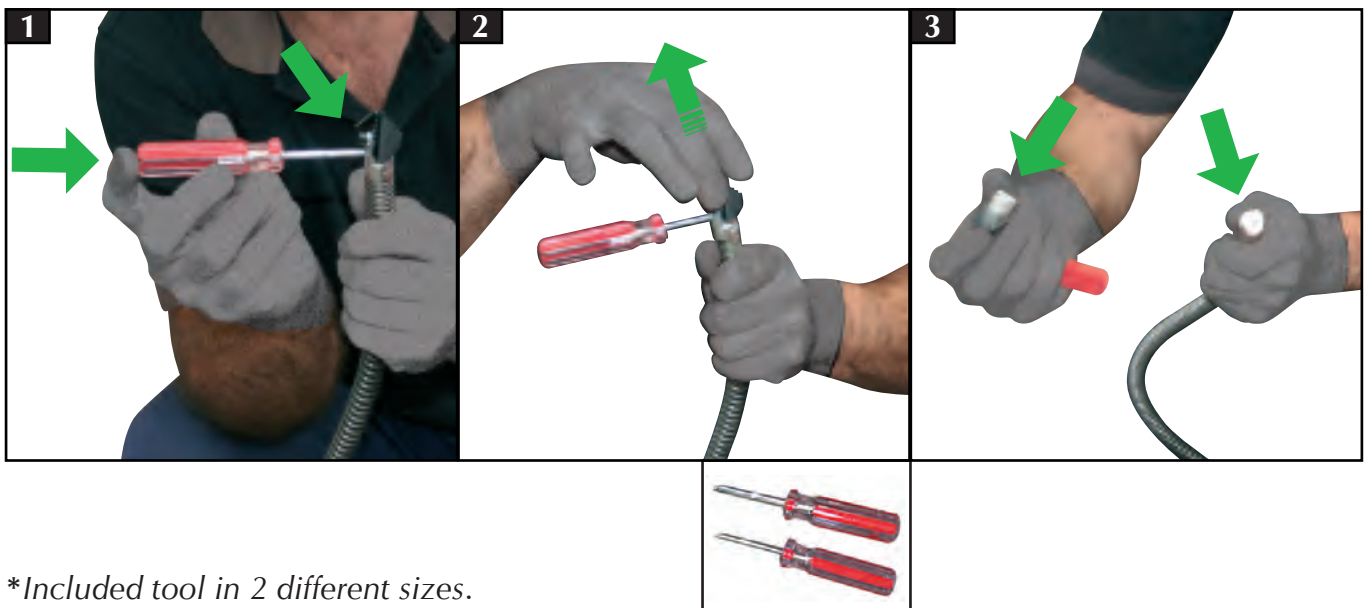


For using spring (A) with any of the accesories shown on page 14, piece must be taken out by pulling button (B). Then, spring must be introduced by hand into the inner space of the machine. Supports (C) are used to regulate the machine height and angle, by adjusting the nuts positions.



#### INSTRUCTIONS FOR CHANGING THE ACCESORIES

1. Insert the wedge shape *tool*\* as it is shown in the picture. A piston will be released, leaving a gap where the user must fix the needed **accessory**.
2. For taking out the **accessory**, the wedge shape *tool*\* must be inserted as explained above. When the piston is released, the user must pull out the accessory.
3. Proceeding as previously commented, the end of the spring will be freed from the **accessory**.



\*Included tool in 2 different sizes.



## NOTES

### **IMPORTANT!**

The maker will not take responsibility for damage or malfunction as a result of the machine being incorrectly used or, applied for a purpose for which it was not intended.

For ordering spare parts, please refer to the Spare Parts Drawing and note the needed number.



According to Waste Electrical and Electronic Equipment directive (WEEE), these ones must be collected and arranged separately. If you have to throw them out, please, do not use the usual rubbish. Please, contact your distributor for free recycling.



## GUARANTEE

The maker guarantees to the machine owner 12 months against any manufacture defect. This guarantee do not cover the parts wich are consumables.

**Note: to apply the guarantee its necessary to send the “GUARANTEE CERTIFICATE” duly filled within one week after purchased the machine to the maker.**

