

Powerful, electric pressure testing pump for pressure and tightness tests of piping systems and receptacles.

Testing and pressure range  $\leq 6 \text{ MPa}/60 \text{ bar}/870 \text{ psi}$

Pumping capacity 6.5 l/min

Water, hydrous solutions, emulsions

pH-value of liquids 7 – 10

Temperature of liquids  $\leq 60^\circ\text{C}$

Viscosity of liquids  $\leq 1.5 \text{ mPa s}$

**REMS E-Push 2 – electric charging and testing.**  
**Up to 60 bar. With adjustable pressure limiting.**  
**1300 W. Self sucking.**

### Universal use

In sanitary, heating, solar and sprinkler installation, for compressed air, steam and cooling systems, oil installations, in boiler and pressurised vessel construction.

### Design

Robust, compact, light. Weighs only 10 kg. Easy to carry. Wear reduced high power piston pump. Pressure gauge, damped by filling with glycerine,  $p \leq 6 \text{ MPa}/60 \text{ bar}/870 \text{ psi}$ . High-pressure hose with fabric ply prevents measurement errors. Suction hose with suction filter. Non-return valve in the suction hose prevents the suction hose from running empty in standstill times; therefore shorter suction times. Suction hose and high pressure hose with  $\frac{1}{2}$ "-connection. Connecting piece with pressure gauge,  $p \leq 6 \text{ MPa}/60 \text{ bar}/870 \text{ psi}$ , and shut off valve for pressure and tightness testing also after removal of the high pressure pump, e.g. theft protection or for use at several testing points, as accessory. Fine scale pressure gauge,  $p \leq 1.6 \text{ MPa}/16 \text{ bar}/232 \text{ psi}$ , for reading a pressure change of 0.01 MPa/0.1 bar/1.45 psi for tightness testing according to DIN 1988, as accessory.

### High power piston pump

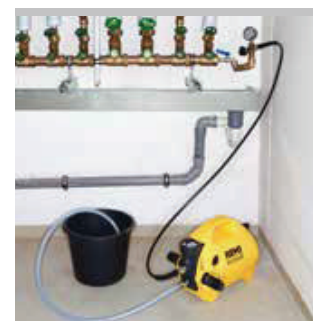
Self-sucking high power piston pump running in a sealed oil bath with wear reduced pressure piston in stainless steel. Proven, powerful capacitor motor, 1300 W, very powerful and fast. High pumping capacity of 6.5 l/min. Pressure and tightness testing up to 6 MPa/60 bar/870 psi.

### Adjustable pressure limiting

Pressure limiting in 6 stages, 1 – 6 MPa/10 – 60 bar/145 – 870 psi, adjustable to the necessary pressure in the pipe system/tank.



Info



### Supply format

**REMS E-Push 2.** Electric pressure testing pump with pressure gauge,  $p \leq 6 \text{ MPa}/60 \text{ bar}/870 \text{ psi}$ , for pressure and leak testing of pipe systems and tanks up to 6 MPa/60 bar/870 psi, with adjustable pressure limiting. Pump unit with capacitor motor 230 V, 50 Hz, 1300 W. 1.5 m suction hose with  $\frac{1}{2}$ " connection and gaskets, suction filter with non-return valve. 1.5 m high-pressure hose with  $\frac{1}{2}$ " connection and gaskets. In a carton.

	Art.-No.	
	115500	

### Accessories

Description	Pressure $p \leq \text{MPa}/\text{bar}/\text{psi}$	Art.-No.	
Connecting piece with pressure gauge and shut off valve	6/60/870	115110	
Fine scale pressure gauge	1.6/16/232	115045	

