

## ■ Model No. **EP-30S**

Height : 374 mm

Weight : 18.0 kgs (w/o oil)

## ■ Specifications:

Max. Pressure : 700 bar

Oil Required : 3000 cc

Input : Single phase 50/60Hz 110V 、 120V 、 220V 、 230V  
350W motor

## ■ Oil Delivery:

2.6 L / min at low pressure

0.32 L / min at high pressure

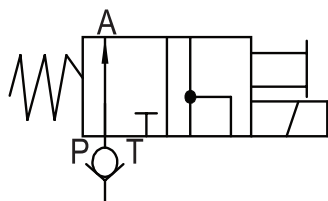
## ■ Features:

- Fully remote controlled, allows the operator to advance, hold or retract at any time.
- Two-stage pumping action.
- Cuts and crimps can be adjusted as necessary by stopping the advance or retract mode.
- 3/4 HP Heavy-Duty motor.
- Durable steel construction with built-in carrying handle.
- Low amperage requirement.
- Oil level is visible.

## ■ Accessories:

2M hydraulic hose attached

## ■ Hydraulic Symbol Table



• Optional remote controller, shall order separately.

